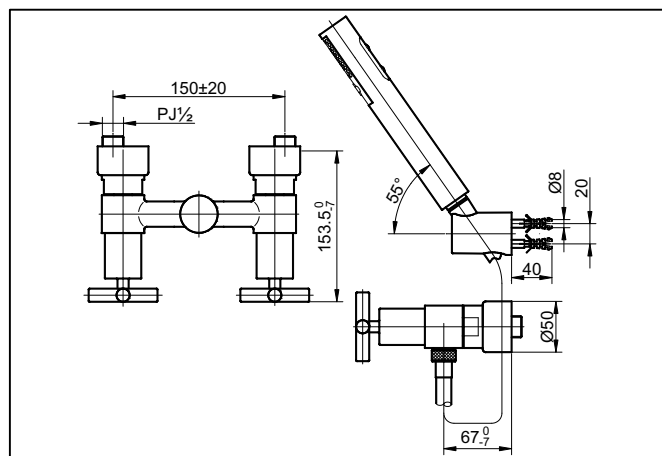
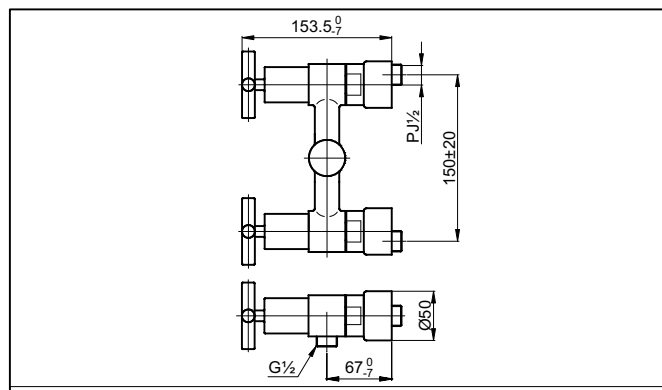


SPECIFICATIONS



TX 446 SECM
"EGO II" Cross Handle Combination Shower Set



TX 446 SECV1BR
"EGO II" Cross Handle Combination Shower Mixer w/o Hand Shower Set

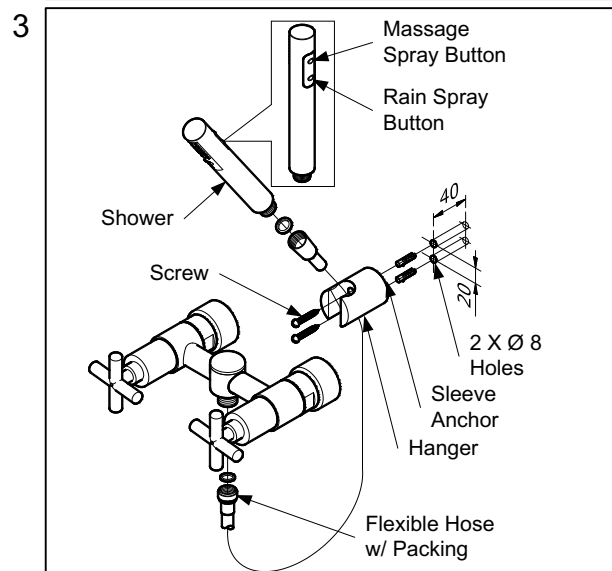
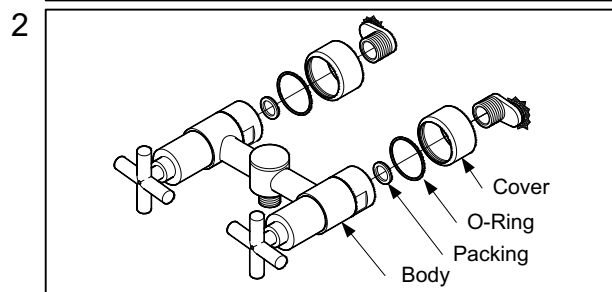
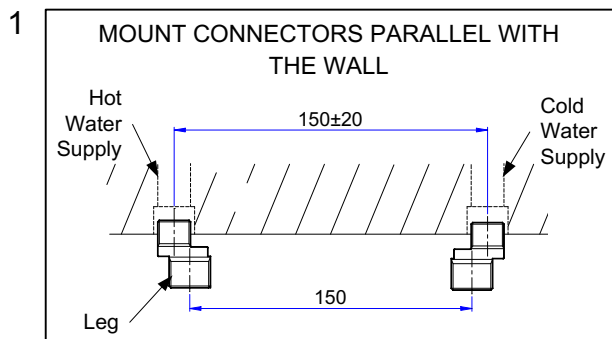
OPERATING CONDITIONS

1. Water supply pressure : 0.05 ~ 0.75 MPa.
2. Ensure that water supply is clean (No Sand, Dirt, Etc.).

MAINTENANCE

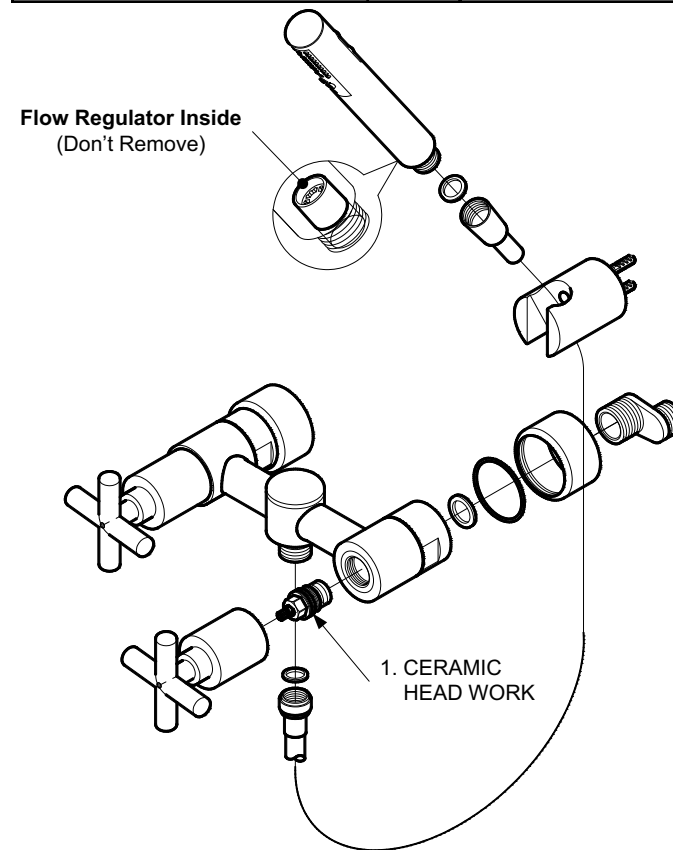
Always wipe chrome plated area with dry soft cloth, and sometimes wipe it with cloth soaked in mild soap.

INSTALLATION



TROUBLESHOOTING

PROBLEM	CHECK POINT	SOLUTION
Water leaks around the handle	1	Tighten



ATTENTION

1. Use of abrasive cleaning material such as; detergents containing hydrochloric acids, thinner, polishing powder, and nylon brush is not recommended.
2. Flow Regulator should not be remove because it could damage the system