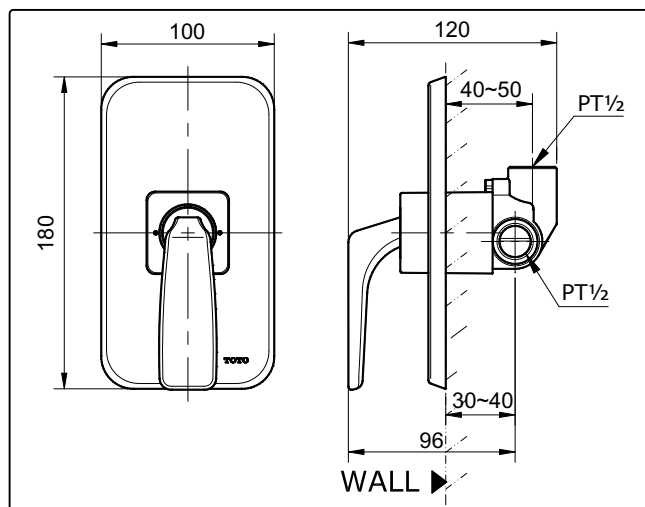


SPECIFICATIONS



OPERATING CONDITIONS

1. Water supply pressure : 0.05 ~ 0.75 MPa.
2. Ensure that water supply is clean (No Sand, Dirt, Etc.).

MAINTENANCE

Always wipe chrome plated area with dry soft cloth, and sometimes wipe it with cloth soaked in mild soap.

ATTENTION

Use of abrasive cleaning material such as; detergents containing hydrochloric acids, thinner, polishing powder, and nylon brush is not recommended.

INSTALLATION

1.

Diagram showing the connection of hot and cold water supply lines to the shower mixer. The hot water supply is connected to the top left port, and the cold water supply is connected to the top right port. The outlet is labeled 'To Shower Head'.
2.

Diagram showing the removal of the cover and the application of mortar to the mounting bracket. The cover is shown being removed from the bracket, which is then embedded in a wall of mortar.

** Remove the cover after the mortar has dry*
3.

Diagram showing the final assembly of the shower mixer. The handle is attached to the bracket, and the flange is secured with a bolt and a hex key.

TROUBLESHOOTING

PROBLEM	CHECK POINT	SOLUTION
Water leaks around the handle	1	Tighten
Handle is loose	2	Tighten

