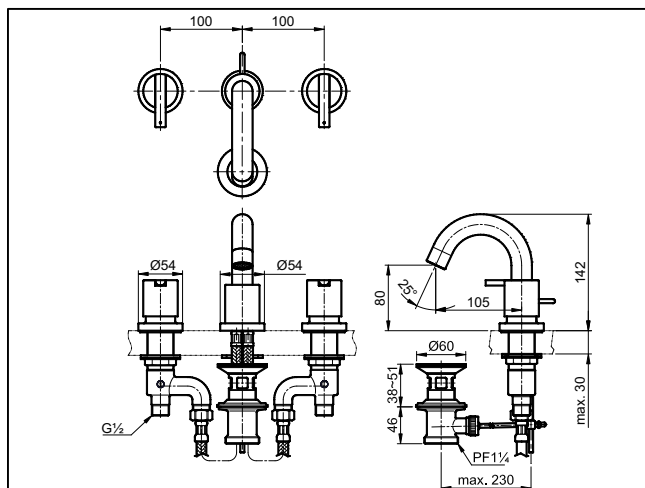
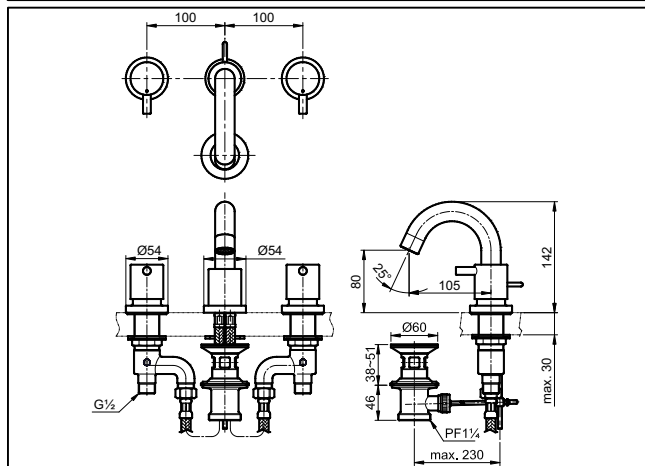


SPECIFICATIONS



TX119LEBR

"EGO" 8" Lavatory Faucet w/ 1¼" Pop-Up Waste



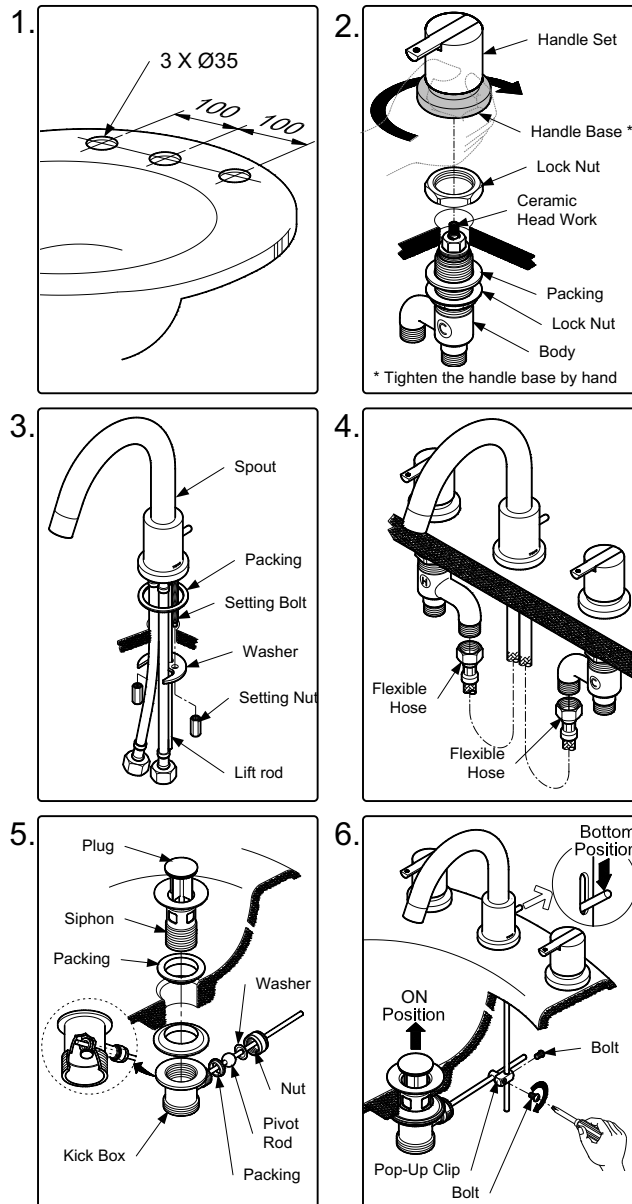
TX119LESBR

"EGO II" 8" Lavatory Faucet w/ 1¼" Pop-Up Waste

OPERATING CONDITIONS

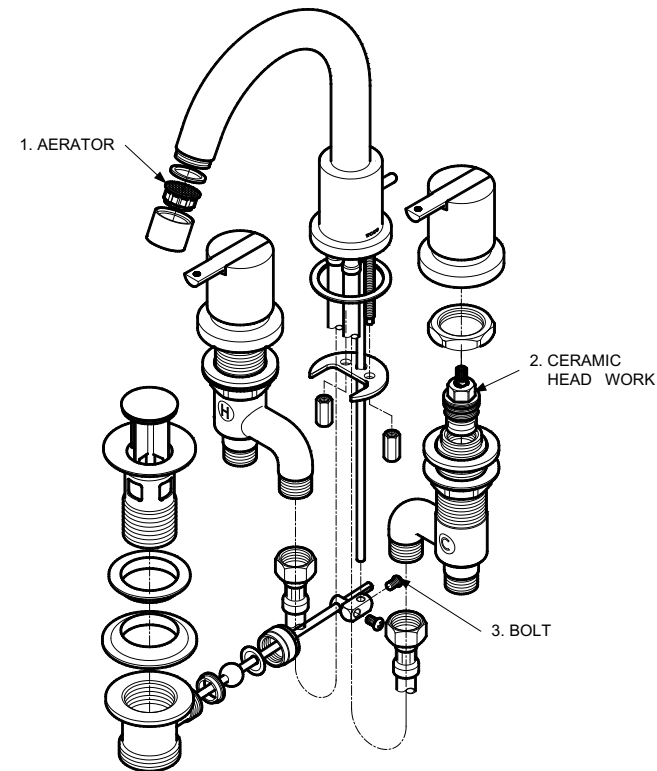
1. Water supply pressure : 0.05 ~ 0.75 MPa.
2. Ensure that water supply is clean (No Sand, Dirt, Etc.)

INSTALLATION



TROUBLESHOOTING

PROBLEM	CHECK POINT	SOLUTION
Flow rate unsatisfactory	1	Remove and clean
Water leaks around the handle	2	Tighten
Plug cannot open and close	3	Tighten



MAINTENANCE

Always wipe chrome plated area with dry soft cloth, and sometimes wipe it with cloth soaked in mild soap.

ATTENTION

Use of abrasive cleaning material such as; detergents containing hydrochloric acids, thinner, polishing powder, and nylon brush is not recommended