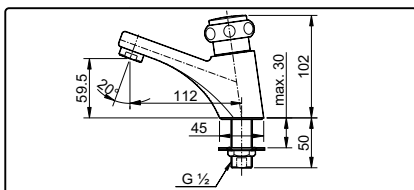


TOTO

"ROYAL CROWN" LAVATORY FAUCET (COLD ONLY)

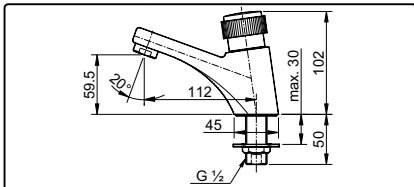
TX111LRY

SPECIFICATIONS



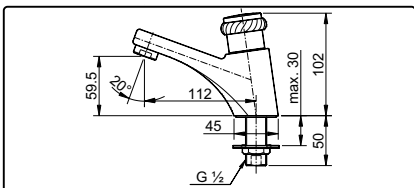
TX 111 LRYA

"ROYAL CROWN" Lavatory Faucet (Cold Only)



TX 111 LRYN

"ROYAL CROWN" Lavatory Faucet (Cold Only)



TX 111 LRYR

"ROYAL CROWN" Lavatory Faucet (Cold Only)

OPERATING CONDITIONS

1. Water supply pressure : 0.05 ~ 0.75 MPa.
2. Ensure that water supply is clean
(No Sand, Dirt, Etc.).

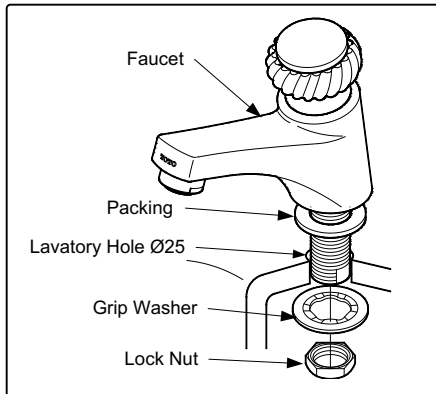
ATTENTION

Use of abrasive cleaning material such as; detergents containing hydrochloric acids, thinner, polishing powder, and nylon brush is not recommended

MAINTENANCE

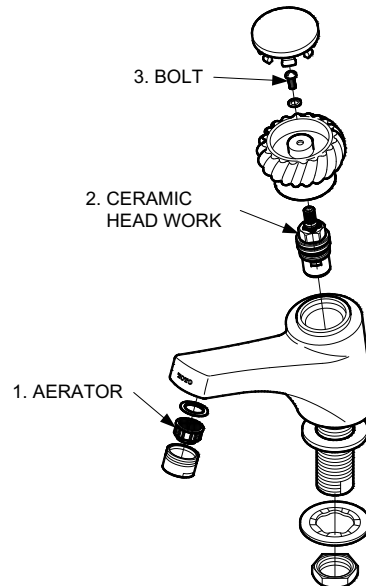
Always wipe chrome plated area with dry soft cloth, and sometimes wipe it with cloth soaked in mild soap.

INSTALLATION



TROUBLESHOOTING

PROBLEM	CHECK POINT	SOLUTION
Flow rate unsatisfactory	1	Release
Water leaks around the handle	2	Tighten
Handle is Loose	3	Tighten



S06101N

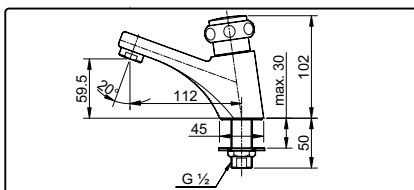
R4

TOTO

"ROYAL CROWN" LAVATORY FAUCET (COLD ONLY)

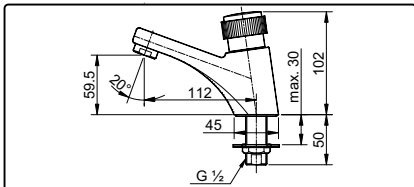
TX111LRY

SPECIFICATIONS



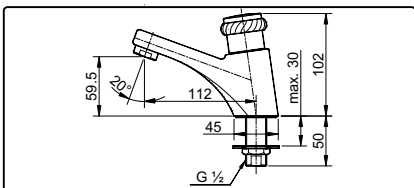
TX 111 LRYA

"ROYAL CROWN" Lavatory Faucet (Cold Only)



TX 111 LRYN

"ROYAL CROWN" Lavatory Faucet (Cold Only)



TX 111 LRYR

"ROYAL CROWN" Lavatory Faucet (Cold Only)

OPERATING CONDITIONS

1. Water supply pressure : 0.05 ~ 0.75 MPa.
2. Ensure that water supply is clean
(No Sand, Dirt, Etc.).

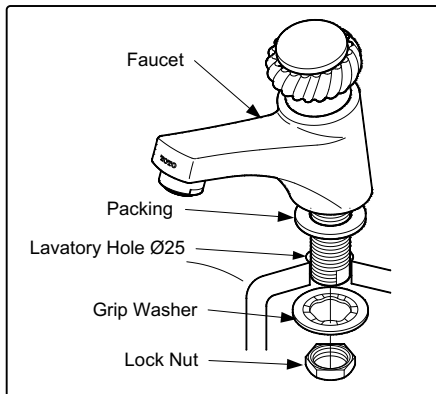
ATTENTION

Use of abrasive cleaning material such as; detergents containing hydrochloric acids, thinner, polishing powder, and nylon brush is not recommended

MAINTENANCE

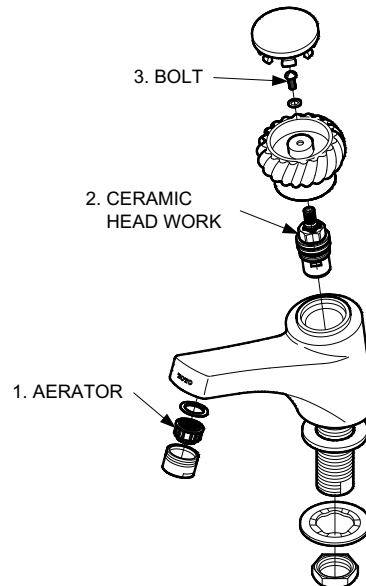
Always wipe chrome plated area with dry soft cloth, and sometimes wipe it with cloth soaked in mild soap.

INSTALLATION



TROUBLESHOOTING

PROBLEM	CHECK POINT	SOLUTION
Flow rate unsatisfactory	1	Release
Water leaks around the handle	2	Tighten
Handle is Loose	3	Tighten



S06101N

R4